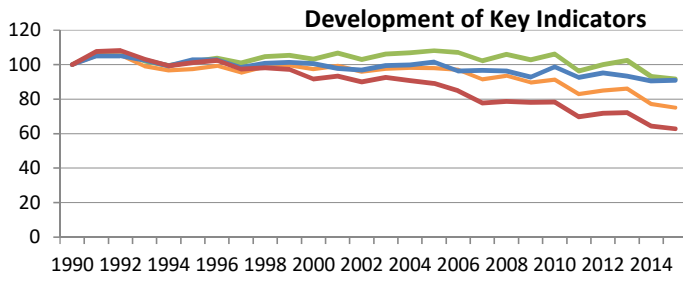


Key Indicators	2015
Population [million]	8.30
GDP per capita (PPP) [US\$]	53746.99
CO ₂ per capita (excl. LULUCF) [t]	4.49
CO ₂ per GDP (PPP) [t/1000US\$]*	0.10
TPES per GDP (PPP) [MJ/US\$]	2.30
CO ₂ per TPES [t/TJ]*	36.31
Share of Renewable Energy of TPES	22.26%

GHG = Greenhouse Gases
 TPES= total primary energy supply
 PPP= purchasing power parity in prices of 2005
 LULUCF = Land Use, Land Use Change and Forestry
 Source: IEA (2017)

Indicators	Weighting	Score	Rank
GHG per Capita - current level (including LULUCF)	10%	74.32	18
GHG per Capita - current trend (excluding LULUCF)	10%	70.02	13
GHG per Capita - compared to a well-below-two-degrees benchmark	10%	58.07	35
GHG 2030 Target - compared to a well-below-two-degrees benchmark	10%	52.35	34
Share of Renewable Energy in Energy Use (TPES) - current level (including hydro)	5%	48.80	12
Renewable Energy - current trend (excl. hydro)	5%	23.11	40
Renewable Energy Development (excluding hydro) - compared to a well-below-two-degrees benchmark	5%	21.56	32
Renewable Energy 2030 Target (including hydro) - compared to a well-below-two-degrees benchmark	5%	47.35	25
Energy Use (TPES) per Capita - current level	5%	63.27	37
Energy Use (TPES) per capita - current trend	5%	61.56	19
Energy Use (TPES) per Capita - compared to a well-below-two-degrees benchmark	5%	72.24	23
Energy Use 2030 Target - compared to a well below two-degrees-benchmark	5%	85.39	12
National Policy	10%	72.53	10
International Policy	10%	73.08	16

Development in per cent
(1990 level = 100)



- CO2 emissions
- CO2/capita
- CO2 per TPES [t/TJ]*
- CO2 per GDP [t/1000US\$]*

Remarks