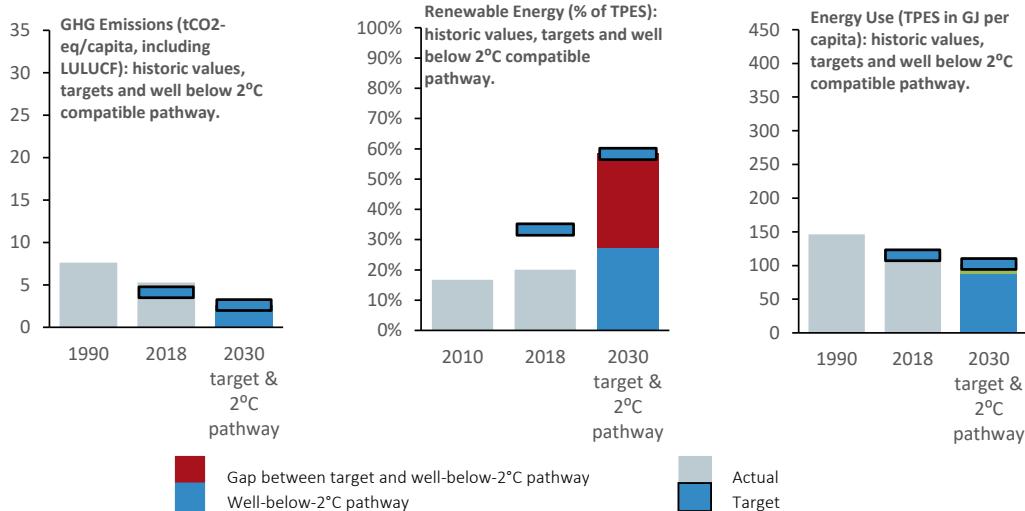
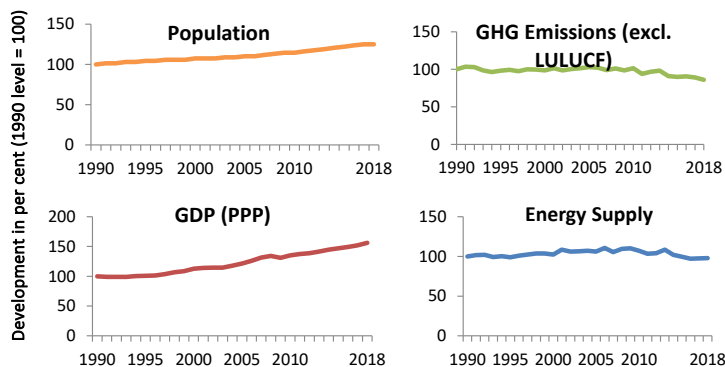


### Well-below-2°C compatibility of current levels and 2030 targets



### Development of Key Indicators



Key Indicators	2018
Population [million]	8,50
GDP per capita (PPP) [US\$]	66294,12
GHG per capita (excl. LULUCF) [t]	5,45
CO <sub>2</sub> per GDP (PPP) [t/1000US\$]	0,00
TPES per GDP (PPP) [MJ/US\$]	1,77
CO <sub>2</sub> per TPES [t/TJ]	46,46
Share of Renewable Energy of TPES***	20,02%

GHG = Greenhouse Gases  
 TPES = Total Primary Energy Supply  
 PPP = Purchasing Power Parity in prices of 2005  
 LULUCF = Land Use, Land-Use Change and Forestry  
 Sources: IEA (2019), PRIMAP (2019)

Indicators	Weighting	Score**	Rating	Rank
<b>GHG Emissions</b>	<b>40%</b>	<b>71,33</b>	<b>High</b>	<b>11</b>
GHG per Capita - current level (incl. LULUCF)	10%	79,55	High	12
GHG per Capita - current trend (excl. LULUCF)	10%	80,84	High	9
GHG per Capita - compared to a well-below-2°C pathway	10%	60,90	Medium	23
GHG 2030 Target - compared to a well-below-2°C pathway	10%	64,02	Medium	13
<b>Renewable Energy</b>	<b>20%</b>	<b>37,79</b>	<b>Medium</b>	<b>30</b>
Share of Renewable Energy in Energy Use - current level (incl. hydro)	5%	44,99	High	15
Renewable Energy - current trend (excl. hydro)	5%	29,09	High	30
Share of Renewable Energy in Energy Use (excl. hydro) - compared to a well-below-2°C pathway	5%	27,69	Low	32
Renewable Energy 2030 Target (incl. hydro) - compared to a well-below-2°C pathway	5%	49,39	Low	33
<b>Energy Use</b>	<b>20%</b>	<b>74,75</b>	<b>High</b>	<b>8</b>
Energy Use (TPES) per Capita - current level	5%	62,78	Medium	35
Energy Use (TPES) per Capita - current trend	5%	87,31	High	8
Energy Use (TPES) per Capita - compared to a well-below-2°C pathway	5%	70,87	High	17
Energy Use (TPES) 2030 Target - compared to a well-below-2°C pathway	5%	78,05	High	13
<b>Climate Policy*</b>	<b>20%</b>	<b>49,07</b>	<b>Medium</b>	<b>25</b>
National Climate Policy	10%	48,15	Medium	23
International Climate Policy	10%	50,00	Medium	25

### \*Contributors to "Climate Policy" evaluation

The following national expert(s) agreed to be mentioned as contributor(s) to this year's CCPI: Jürg Staudenmann (Alliance Sud), Georg Klingler (Greenpeace).

\*\* Unweighted

\*\*\*incl. Hydro, excl. Traditional Biomass