



WWF Employee Engagement

Corporate Volunteering Events

Catalogue 2026



Content

Employee Engagement – an Overview

p. 3

NaturAktiv Activities

p. 7

Clean-Ups

p. 32

Run for Nature

p. 34

Contact

p. 35

Employee Engagement – an Overview



Sustainability Meets Team-Building

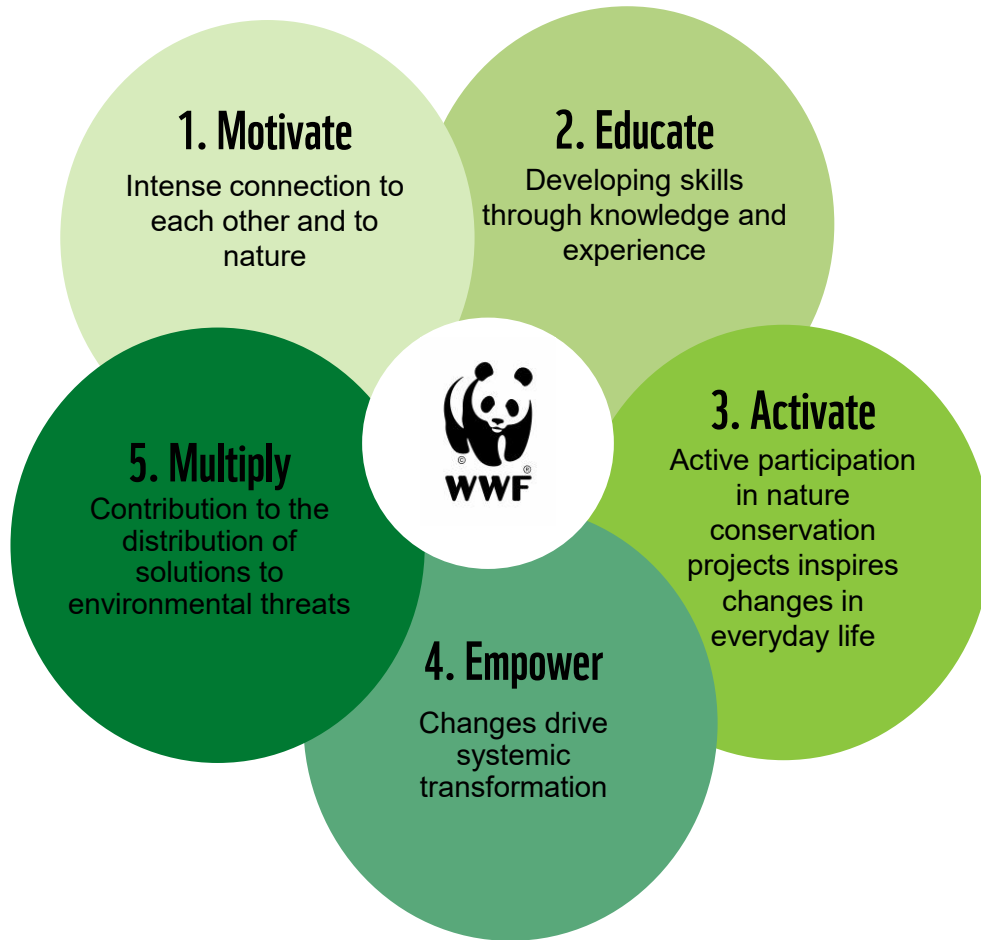
Engagement creates impact – for nature and for your company. More and more businesses are recognizing sustainability as a core value and want to actively support biodiversity and a sustainable future together with their teams. Shared experiences strengthen cohesion, motivation, and productivity.

Corporate volunteering with WWF combines environmental engagement with boosting team spirit, motivation, and employee loyalty.

On site, WWF experts impart valuable knowledge about consumption, loss of biodiversity, and climate change. This creates a double impact: **A strengthened team and an important contribution to the environment.**



Employee Engagement – an Overview



Employee engagement refers to the active involvement of employees and their sense of connection to their organization. **Corporate volunteering** is a form of employee engagement and focuses on the first three steps: **inspiring, educating, and activating**.

Employees have the opportunity to step away from their daily work routine for a day, get hands-on in nature, and make valuable contributions to **environmental projects**. In our volunteering activities, we focus on four key areas:



Maintaining and preserving biodiverse landscapes



Creating and connecting habitats for native animals and plants



Supporting sustainable agriculture



Protecting waters



The icons representing these four focus areas are indicated for each volunteering activity.

Corporate Volunteering – the Offer






We offer **customized programs** – from half-day team outings to multi-day events – and are happy to advise you.

Since 2011, WWF has been successfully organizing corporate volunteering activities and, with 2,000 enthusiastic volunteers annually, is one of the **most experienced providers**.

The **cost price** includes a fully organized day, covering safety plans, materials, expert supervision, and regional catering.

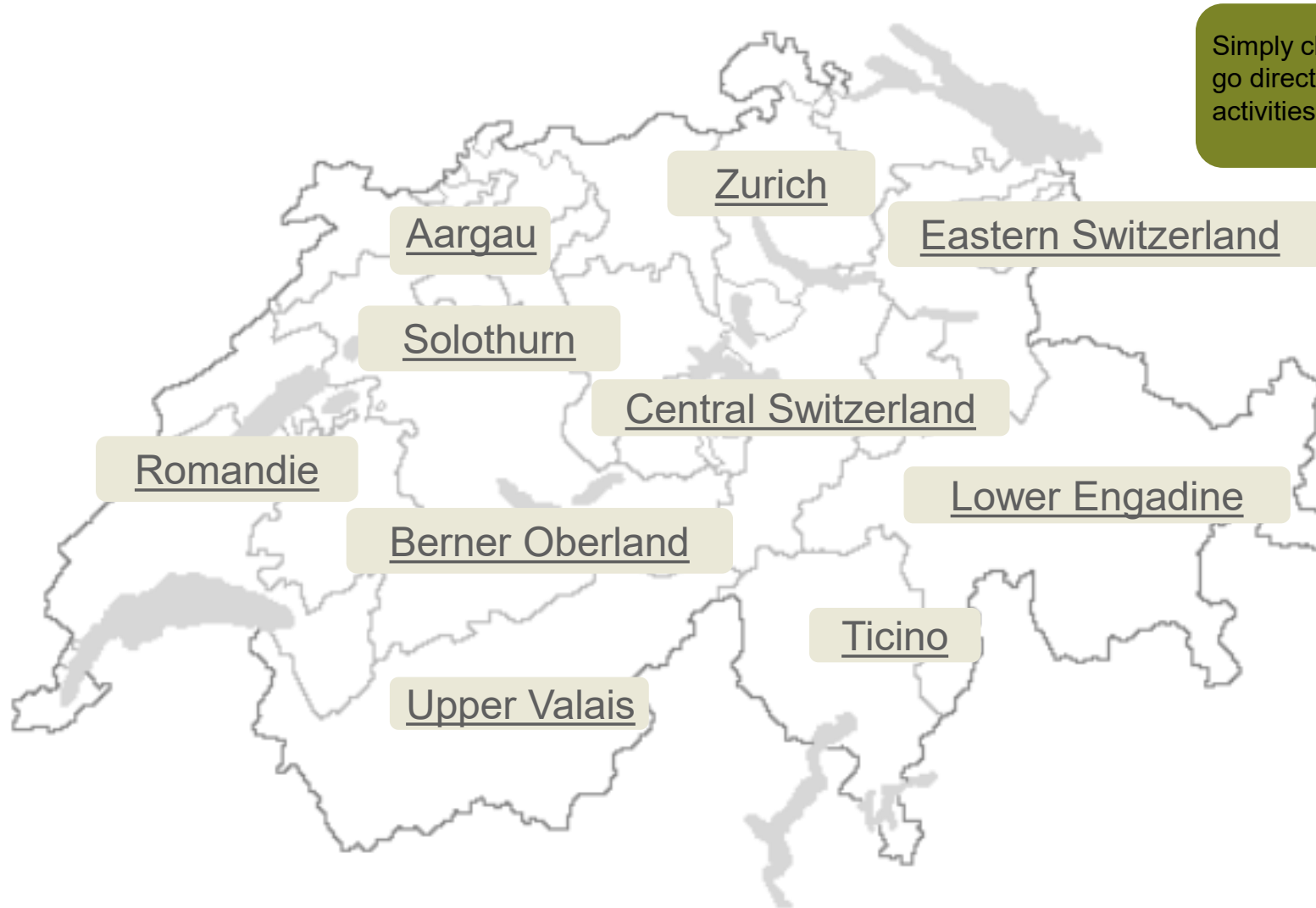
Additionally, we offer **workshops** on sustainability topics to deepen your employees' knowledge. More information can be found [here](#).

 # of participants	 Half day event	 Full day event
5–10 participants	CHF 1'800.–	CHF 2'250.–
11–20 participants	CHF 2'500.–	CHF 3'300.–
21–30 participants	CHF 3'200.–	CHF 4'300.–
31–40 participants	CHF 3'900.–	CHF 5'450.–
41–50 participants	CHF 4'650.–	CHF 6'600.–
51–60 participants		CHF 7'700.–

These are indicative prices, excluding VAT. Costs may vary depending on the activity.



The Locations



Simply click on the location names to go directly to the corresponding activities.



Organic Agriculture at the Dorna Farm

The Dorna Organic Farm in Ausserberg is a lovingly run business specializing in organic animal husbandry, sustainable agriculture, and biodiversity conservation. About three-quarters of the land is managed as biodiversity-promoting areas with extensive farming, with the Mediterranean dry meadows ranking among the most species-rich habitats in Switzerland. The keeping of goats and dwarf zebus contributes to the maintenance of this valuable landscape, while measures such as maintaining a wolf-proof pasture fence support herd protection and promote ecological diversity.

Possible tasks:

- Maintaining a wolf-proof pasture fence
- Clearing of dry meadows
- Maintaining hedges and forest edges

Availability: Mai – mid-September

Language: DE, EN

Participants: 11 - 30

Duration: full day

Biodiversity focus

Physical activity

Team building

Theoretical input



Promoting Biodiversity in Engadine

The Engadin region captivates with its unique landscapes, which make an important contribution to biodiversity. In particular, the species-rich dry meadows provide a valuable habitat for numerous animal and plant species. Volunteering activities in this region are ideal for multi-day stays. Upon request, the program can be customized – for example, with an insight into traditional cheese-making on the alpine pastures. Multi-day activities are also possible

Locations: Guarda, Lavin, Tarasp, Vnà (weitere Informationen finden Sie auf der nächsten Seite).

Possible tasks:

- Maintaining dry meadows and fens
- Creating small structures for various animal species
- Collecting waste along the river Inn

Availability: June - October

Language: DE

Participants: 5 - 30

Duration: half-day/full day

Biodiversity focus

Physical activity

Team- building

Theoretical input



Promoting Biodiversity in Engadine – Selection

Guarda

- Mosaic of different habitats through dry stone walls and dry meadows
- Diverse landscape with alpine meadows and fens

Lavin

- Preserve habitats for endangered species
- Mission in a littering project

Tarasp

- View on the imposing Tarasp castle
- Help with the maintenance of a fen
- Special landscape: the “La Nair” moorland lake

Vnà

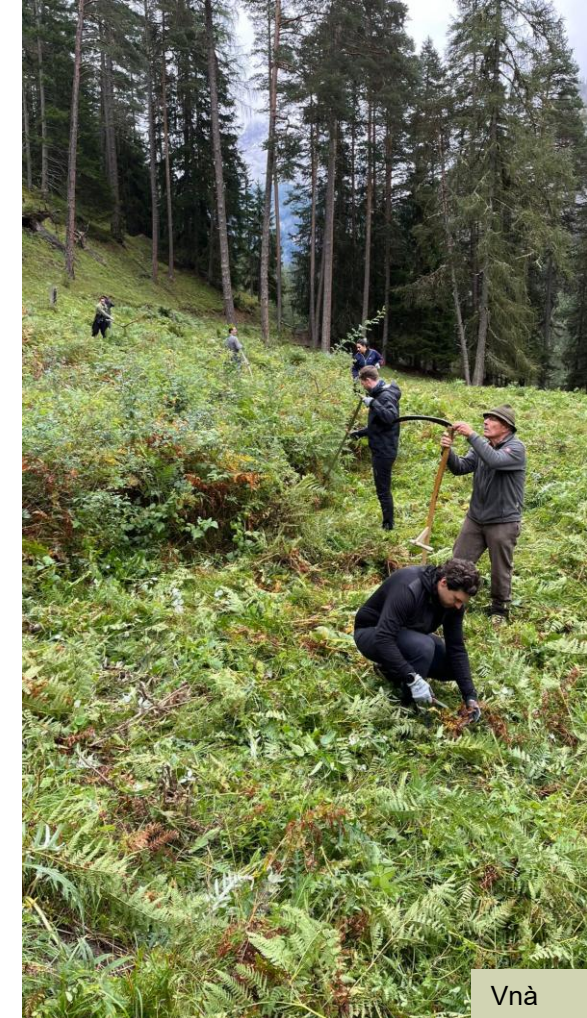
- View on the Lower Engadine Dolomites
- Mission area is part of the federal inventory of landscapes worthy of protection
- Help with the preservation of a diverse landscape



Guarda



Tarasp



Vnà

Enhancing Habitats at Zopfhof Farm

The organic Zopfhof farm is located in a diverse cultural landscape featuring pastures, forest edges, an orchard meadow, and an herb garden. Through targeted enhancement measures, the farm provides important refuges for wildlife—especially in intensively used agricultural areas, where such structures serve as stepping stones between larger habitats. During an assignment, a variety of activities to promote biodiversity may be carried out depending on the season and current needs. These can include, for example, creating brushwood piles as shelters for hedgehogs, stoats and weasels, building nest boxes for birds and bats, or implementing measures to support wild bees. Hedge maintenance or forest edge enhancement may also be part of the work.

Possible tasks:

- Enhancing the orchard meadow
- Creating a variety of structures and refuge areas for wildlife
- Building nest boxes for birds

Availability: all year

Language: DE

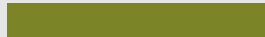
Participants: 5 - 40

Durability: half day/full day

Biodiversity focus



Physical activity



Team-building



Theoretical input



Biodiversity at Herzberg

The area around the Herzberg Seminar House features unique and colorful habitats such as dry meadows, hedgerows, and rough pastures, which rank among the most species-rich habitats in Switzerland. This diverse landscape is home to numerous plant and animal species, including some rare and endangered ones. During your volunteering activity, the focus will be on maintaining the dry meadows and building stone piles for weasels, bats, hedgehogs, insects, and other “hotel guests.” In doing so, you enhance valuable habitats for endangered plants and animals and make an important contribution to the preservation of this special cultural landscape.

Possible tasks:

- Maintaining and clearing dry meadows
- Creating small structures for various animal species
- Maintaining hedges, the home of many birds

Availability: all year

Language: DE, EN

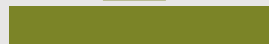
Participants: 5 – 60

Duration: half day/full day

Biodiversity focus



Physical activity



Team-building



Theoretical input



Nature Conservation in Ticino

There are numerous volunteering opportunities in Ticino: In collaboration with the project “Natur Verbindet”, volunteers support farms in implementing innovative, biodiversity-promoting cultivation methods. In addition, activities take place in unique natural landscapes – for example, in the Bolle di Magadino floodplain or the gorges of the Gole della Breggia. There, targeted conservation measures are carried out to preserve these valuable habitats.

Locations: Balerna, Gudo, Lodrino, Magadino, Pedrinate, Pura (further information on the next page).

Possible tasks:

- Planting fruit trees and local vegetable varieties
- Removing invasive plant species
- Creating small structures for various animal species

Availability: April – October

Language: DE, EN, IT

Participants: 5 - 40

Duration: half day/full day

Biodiversity focus

Physical activity

Team-building

Theoretical input



Nature Conservation in Ticino - Selection

Gole della Breggia (Balerna)

- Work in the gorge park: one of the most important geological sites south of the Alps
- Removal of invasive plant species

Bolle di Magadino (Magadino)

- Mission in a valuable floodplain area and a landscape of national importance
- Removal of invasive plant species

Seminterra (Gudo)

- Help at a cooperative
- Insights into a collective, solidary and joint approach to agriculture
- Create small structures for various animal species

Hotel Paladina (Pura)

- Assisting with the removal of invasive plant species on the hotel grounds
- Implementing concrete measures to promote biodiversity
- Removing palm trees in forested areas



Bolle di Magadino



Seminterra



Seminterra

Conserving Habitats in Nature Park Thal

The Nature Park Thal stretches across the Jura mountain ranges of the Canton of Solothurn. Over recent decades, the landscape has changed significantly: many valuable small-scale structures have disappeared, resulting in the loss of important habitats and refuges for numerous animal species. Together with your team, you can help enhance forest edges, maintain dry meadows, and restore valuable habitats. In doing so, you will gain fascinating insights into the diversity of this cultural landscape and the complex interactions within the ecosystem. Your engagement makes an important contribution to promoting near-natural habitats and to the long-term conservation of regional biodiversity.

Possible Tasks:

- Creating small structures for various animal species
- Maintaining forest pastures and dry meadows
- Maintaining and enhance forest edges

Availability: March-April, August-November

Language: DE, EN

Participants: 5 - 30

Durability: halbtägig / ganztägig

Biodiversity focus

Physical activity

Team-building

Theoretical input




Biodiversity Conservation in the Vaud Alps

The Vaud Alps are one of the hotspots for biodiversity in the Alpine region. Numerous different species live here that have adapted perfectly to their habitat. However, the local flora and fauna are threatened by the scrub encroachment of alpine pastures and the spread of invasive plants. During our missions, in cooperation with the organization [“Alpes vivantes”](#), you help to maintain the alpine pastures and thus preserve this sensitive habitat.

Locations: Bex, Cergnement, Gryon, Ollon (further information on the next page).

Possible tasks:

- Maintaining the alpine pastures
- Planting and maintain hedges, fruit trees and old vegetable varieties
- Removing invasive plant species

Availability: May - Dezember	Biodiversity focus	
Language: DE, ENG, FR	Physical activity	<div></div>
Participants: 5 - 20	Team-building	<div></div>
Duration: half day/full day	Theoretical input	<div></div>



Work in the Vaud Alps - Selection

Pont de Nant (Bex)

- Work in the alpine vegetable garden
- Cultivation of old vegetable varieties which increase biodiversity
- Immersion in the topic of alpine plants and their protection

Jardin botanique alpin La Thomasia (Bex)

- Work in the botanical alpine garden
- Help with the care of 3000 mountain plants
- Learn interesting facts about alpine plants and the threats they face

Bex

- Removal of invasive plant species such as Tree of heaven and Japanese knotweed

Cergnement (Gryon)

- Removal of invasive plant species on the alp
- Insights into the field of sustainable agriculture
- Learn about the topic of “local biodiversity”

Ollon

- Cleaning up caves and sinkholes, a special cultural heritage of the region
- Removal of invasive plant species



Pont de Nant



© Alpes Vaudoises

La Thomasia



Cergnement



© Alpes Vivantes

Ollon

Nature Protection in the Romandie

These volunteering activities help protect valuable natural areas such as dry meadows, vineyard plots, wetlands, and other habitats that are crucial to biodiversity in Switzerland. Through targeted conservation work – ranging from removing invasive plant species and cutting and rejuvenating hedgerows to wetland management – habitats are preserved, revitalized, or enhanced. At the same time, participants gain insights into ecological relationships, the maintenance of biotopes, learn about local species, and discover how they can personally contribute to nature conservation.

Locations: Canton of Geneva: Vevyrier, Sartigny or upon request, Lower Vallais: Salvan, Canton of Vaud: Berolle, Dizy, Essertines-sur-Rolle, Canton of Neuchatel: upon request (further information on the next page).

Possible tasks:

- Removing invasive plant species
- Maintaining hedgerows
- Managing wetlands

Availability: February - November

Language: ENG, FR

Participants: 5 - 30

Duration: half day/full day

Biodiversity focus

Physical activity

Team-building

Theoretical input



Nature Protection in the Romandie - Selection

Wetland management (location by arrangement)

- Cutting shrubs to keep typical wetland areas open
- Scything or mowing vegetation to promote plant diversity
- Removal of cut vegetation from the wetland

Essertines-sur-Rolle (VD)

- Removal of invasive plants such as brambles and fleabane
- Maintenance of ponds and streams
- Insight into beekeeping and light tasks at the beehives

Satigny (GE) or Dizy (VD)

- Maintenance, pruning, and rejuvenation of old hedgerows
- Creation of wood piles as habitats for stoats and other small animals
- Engagement with the topic of natural habitat connectivity

Berolle (VD)

- Removing invasive neophytes such as goldenrod and Canadian fleabane
- Identifying and classifying invasive species
- Exploring alternatives and possible courses of action



Wetlands



Essertines-sur-Rolle



Satigny




Berolle

Exciting Encounters at the Olmerswil Camel Farm

The Olmerswil Camel Farm in Neukirch an der Thur has been transformed into a unique experience farm with a strong ecological focus. Natural structures on the site are preserved, enhanced, and newly created, providing valuable habitats for numerous native animal and plant species. Support the farm in maintaining the landscape and actively contribute to the preservation of these habitats—while encountering the farm’s unusual animal residents along the way. The central project of this season is the creation of a nature trail to further strengthen environmental education.

Possible tasks:

- Creating an educational trail
- Renewing deadwood hedges
- Removing invasive plant species

Availability: April - October	Biodiversity focus	
Language: DE	Physical activity	<div><div></div></div>
Participants: 5 - 20	Team-building	<div><div></div></div>
Durability: half day/full day	Theoretical input	<div><div></div></div>



Nature Conservation in Eastern Switzerland

Eastern Switzerland is characterized by a unique diversity of landscapes—from fens and dry meadows to species-rich forests and structurally diverse alpine and cultural landscapes. Our projects take place on farms committed to sustainable agriculture, offering you fascinating insights into ecological connections in alpine environments and other valuable natural habitats.

Locations: Alpstein, Amriswil, Bodensee, Flums, Gossau, Nesslau-Neu, St. Gallen, Toggenburg, Walensee, Weissbad (further information on the next page).

Possible Tasks:

- Maintaining alpine pastures and forest edges
- Supporting sustainable agriculture
- Creating small structures for various animal species

Availability: March - November

Language: DE, EN

Participants: 10 - 30

Durability: full day

Biodiversity focus

Physical activity

Team-building

Theoretical input



Nature Conservation in Eastern Switzerland - Selection

Appenzell

- Work on the Knechtle permaculture farm
- Immersion in the topics of “permaculture” and “circular thinking in agriculture”

Flumserberg (Flums)

- Strazza farm as a place of community: gradual transformation of a formerly intensively used agriculture property
- Support sustainable agriculture focused on closed-loop systems and the promotion of high biodiversity

Quinten (Lake Walen)

- Arrival at the work site by boat across Lake Walen
- Work in the vineyards
- After the hard work you can enjoy an organic wine tasting

Walenstadt (Lake Walen)

- Work on the Lüsis, Schwaldis or Säls Alps
- View of the impressive Churfisten
- Working towards the preservation of the habitat of numerous rare reptiles and insects





Active Seminar: «On a Night Safari with Bats»

Our active seminar is a very special NatureActive project, as the hands-on conservation work is complemented by an in-depth theoretical input. First, insects and beetles—the primary food source of these mysterious mammals—are promoted through practical measures. Afterwards, you will get to know these fascinating animals with the help of a bat expert. After the theory session, dusk slowly sets in. Equipped with an ultrasound detector, we then head out on a night safari. With a bit of luck, we will observe the nocturnal hunters catching their prey and listen in as they hunt.

Possible tasks:

- Creating small structures for various animal species
- Maintaining the forest and forest edges
- Planting native shrubs and night-blooming plants

Availability: May, August - October	Biodiversity focus	 
Language: DE	Physical activity	<div><div></div></div>
Participants: 5 - 20	Team-building	<div><div></div></div>
Durability: 7 h (Afternoon incl. evening) or 5h as an after-work-event	Theoretical input	<div><div></div></div>



Off into the Forest!

In our forest project, you and your team actively contribute to the preservation and sustainable development of our forests. The focus is on supporting private forest owners who are committed to future-proof, climate-adapted forestry. Your participation directly helps shape the so-called “forest of the future.”

You will also gain fascinating insights through exchanges with the district foresters, who share practical perspectives on the challenges and opportunities of sustainable forest management.

Possible Tasks:

- Removing invasive plant species
- Cutting a clearance profile along pathway networks
- Clearing areas in preparation for new plantings
- Building a forest garden

Availability: September - April

Language: DE, EN

Participants: 5 - 20

Durability: half day/full day

Biodiversity focus

Physical activity

Team-building

Theoretical input



Maintaining Flower Meadows on the Grüthof farm

The organic farm “Grüthof” stands for sustainable agriculture and active nature conservation. Out of conviction, a former arable field was transformed into valuable habitat: a species-rich flower meadow, a hedge, and an orchard with standard fruit trees have since promoted biodiversity on the farm. During the project, participants gain fascinating insights into the ecological correlations on the meadows, discovering a captivating world of wildflowers and their pollinators. In addition, a delicious lunch featuring the farm’s own organic products awaits, along with the opportunity to learn more about ecological farming.

Possible tasks:

- Removing invasive plant species
- Promoting rare species in the wildflower meadow
- Creating small structures vor various animal species

Availability: March-November

Language: DE, ES

Participants: 5 - 20

Duration: half day/full day

Biodiversity focus

Physical activity

Team-building

Theoretical input



Urban biodiversity at the Allmend Stettbach

Urban areas often offer greater biodiversity than intensively farmed land—as clearly demonstrated by Allmend Stettbach. On this former railway excavation site, a species-rich dry habitat has developed, providing a home for rare plants and animals: orchids, herbs, butterflies, snails, and many more.

To preserve this unique natural area, regular maintenance is essential; otherwise, shrubs and trees would overgrow the open landscape. Join us in protecting this special ecosystem and experience an exciting day of hands-on work in the wild urban nature!

Possible tasks:

- Removing invasive plant species and digging out young bushes
- Maintaining the brookside
- Creating small structures for various animal species

Availability: März-Mai, September-November

Language: DE, EN

Participants: 5 - 20

Duration: half day/full day

Biodiversity focus

Physical activity

Team-building

Theoretical input



Crafting for Local Biodiversity in Frutigen

The “Little Nepal” farm invites people to experience simple and sustainable living. A variety of measures are implemented on the site to protect nature. A major challenge for local biodiversity is the intensive use and fertilization of the meadows, which has led to a significant decline in insect populations. This affects not only wild bees but also many bird species that depend on diverse insect life. As part of the project, nesting and feeding sites are built specifically tailored to the needs of these species, making an important contribution to supporting their populations.

Possible tasks:

- Preparing materials for bee hotels and bird houses
- Drilling, sawing, cutting, and screwing

Availability: May - November

Language: DE, EN

Participants: 5 - 30

Durability: full day

Biodiversity focus

Physical activity

Team-building

Theoretical input



Biodiversity at Griesalp

The Griesalp, nestled in the UNESCO World Heritage site Jungfrau-Aletsch, is an impressive region with rich biodiversity. To protect this valuable ecosystem, targeted maintenance work is required. This includes removing small trees and shrubs to prevent the overgrowth of the pastures and preserve the diversity of flower species. The resulting branches are piled up, creating important habitats for numerous small animals.

In addition to hands-on conservation work and engaging discussions with WWF experts, participants will enjoy local culinary specialties.

Possible tasks:

- Maintaining alpine pastures
- Creating small structures for various animal species
- Building stone beds for a larger growth area

Availability: June - October

Language: DE, EN

Participants: 5 - 40

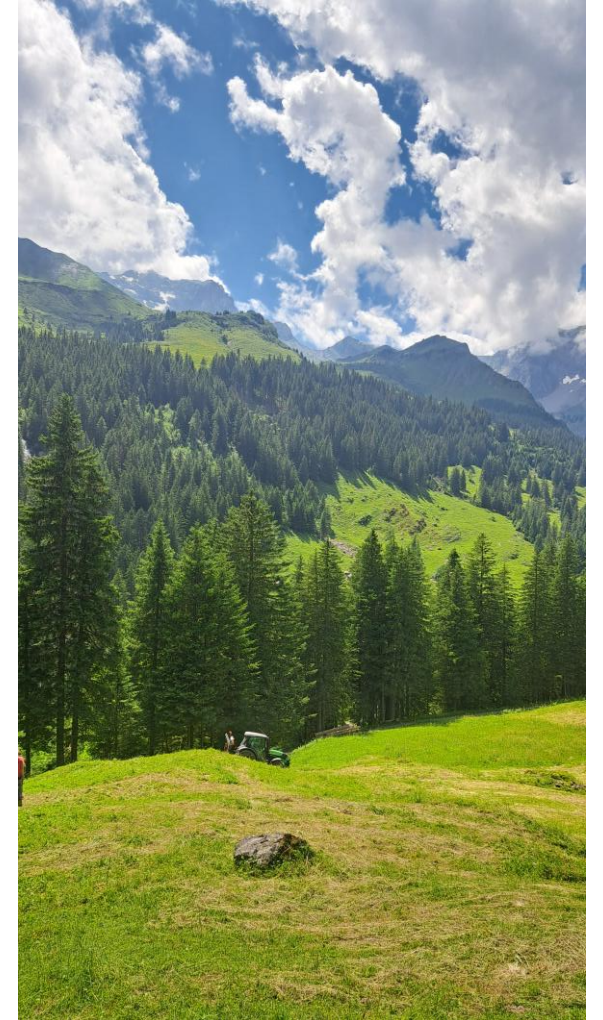
Duration: full day

Biodiversity focus

Physical activity

Team-building

Theoretical input



Cycle of Gardening

Creating and maintaining a garden offers many benefits: it supports native biodiversity, provides healthy food, and encourages physical activity. In this project, you and your team will learn how the cycles of gardening can have positive effects on body and mind—and ultimately on social interaction as well. Depending on the season, different tasks await in the vegetable garden. The day offers space for shared reflection, conveys practical knowledge, and inspires a more ecologically and socially sustainable lifestyle.

Possible tasks:

- Sowing, harvesting and planting
- Preparing soil
- Creating garden beds

Availability: March - November

Language: DE, EN

Participants: 5 - 20

Duration: full day

Biodiversity focus

Physical activity

Team-building

Theoretical input




Glaubenberg: Fascination Peatlands

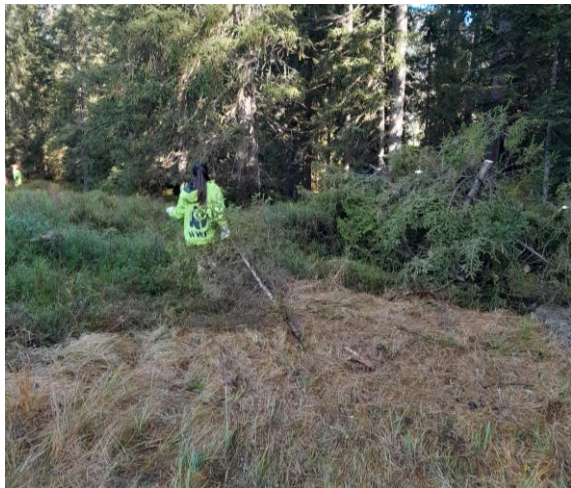
Peatlands are rare but ecologically highly valuable landscapes. Although they cover only about three percent of the Earth’s surface, they store twice as much carbon as all the world’s forests combined. The Glaubenberg peatland landscape is the last large, contiguous peatland area in Switzerland—a refuge for specialized plant and animal species such as the endangered capercaillie and the carnivorous sundew.

During the on-site project, shrubs are removed to preserve the peatland’s original open character and thus secure habitats for typical peatland species.

Possible tasks:

- Maintaining and clearing the peatlands
- Removing felled wood and cuttings
- Learning about the peatlands and the local flora and fauna

Availability: Late August– Late November	Biodiversity focus	
Language: DE, EN	Physical activity	<div><div></div></div>
Participants: 5 - 15	Team-building	<div><div></div></div>
Durability: full day	Theoretical input	<div><div></div><div></div></div>



Sustainable Farming at Grüezi Garte

The “Grüezi Garte” farm in Zug practices close-to-nature, biologically regenerative agriculture based on the principles of permaculture. A central focus is renaturation—the deliberate creation of diverse habitats for small animals. After an engaging farm tour, where you will learn more about sustainable and community-supported agriculture, it’s time to get hands-on: together, we will build stone and branch piles to provide shelter for reptiles and weasels. You will also explore the spacious vegetable garden, where part of the lunch will be freshly harvested.

Possible tasks:

- Creating small structures for various animal species
- Planting hedges and fruit trees
- Removing invasive plant species

Availability: March - October

Language: DE, EN

Participants: 5 - 25

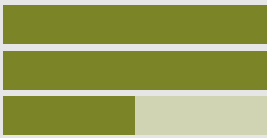
Duration: half day/full day

Biodiversity focus

Physical activity

Team-building

Theoretical input



Sustainable Agriculture in Honau

The Honau vegetable farm in Lucerne successfully combines food production with biodiversity. Across nearly eight hectares, the farm manages vegetable and fruit crops, extensively used meadows, and numerous ecological structural elements that promote biodiversity. A herd of suckler cows with their calves grazes on near-natural pastures, while free-range pigs and other small animals also bring life to the farm.

By getting involved, participants directly support this diverse cultural landscape through creating small ecological structures, planting and caring for shrubs, controlling invasive plants, or improving soil quality with measures such as producing herbal liquid fertilizers.

Possible tasks:

- Creating structures for small animal species
- Removing invasive plant species
- Carrying out planting and soil improvement measures

Availability: March-October

Language: DE, EN

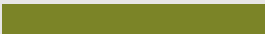
Participants: max. 25

Duration: half day/full day

Biodiversity focus



Physical activity



Team-building



Theoretical input



Example Program NaturAktiv



Program Lower Engadine: Vnà

- 11:00 AM Walk through the village of Vnà,
Reception at the organic farm.
- 11:30 AM Hike or transfer to the work site,
With information about the unique landscape, its rich diversity of
plant and animal life, and mountain agriculture.
- 11:45 AM Explanations and introduction to the work, first tasks.
- 13:00 PM Lunch at the work site.
- 13:45 PM Environmental work: clearing shrubs and maintaining dry
meadows and pastures under the guidance of the farmers.
- 15:30 PM Hike back to the village.
- 16:00 PM Conclusion and Z'Vieri with typical dishes from Engadine
- 17:00 PM Departure

We are looking forward to your commitment!





Awareness in Dealing with the Environment and Resources

The Swiss Litter Report shows that many shorelines are heavily polluted. Around 14,000 tonnes of plastics enter soils and bodies of water every year. This littering not only poses a direct threat to animals and people but also represents a massive waste of resources. Public cleaning costs amount to around 200 million Swiss francs per year. Source: [Bundesamt für Umwelt BAFU](#)

Locations: Zurich, Winterthur, Eastern Switzerland, Basel, Lucerne, Lausanne, Lugano, Genva

Possible tasks:

- Cleaning up shoreline sections and adjacent areas of waste.
- Sorting and disposing the materials properly
- Receiving fascinating information about waste, plastics, consumption, or the salmon comeback from WWF experts

Availability: March-October	Biodiversity focus	 
Language: DE, EN	Physical activity	<div><div></div><div></div></div>
Participants: 5 - 30	Team-building	<div><div></div><div></div></div>
Durability: half day/full day	Theoretical input	<div><div></div><div></div></div>



Example Program Clean-Up (Half Day)



Program: Clean-Up Sihl, Zurich-City

13:30 PM	Reception at the Rio Bar
13:40 PM	Introduction to the topic with Coffee/tea, guessing game
14:00 PM	Clean-Up
15:30 PM	Break with a small snack, input on plastic & consumption or salmon
16:00 PM	Clean-Up continues
17:00 PM	Joint weighing, sorting and disposal of the collected waste
17:30 PM	Departure (near Zurich Main Station)

Our Clean-Ups can also be organized as full day activities. One half of the day can be replaced by the following options:

- a half day workshop, for example on the topic of circular economy
- a guided tour of the Werdhölzli wastewater treatment plant
- a visit to a waste incineration plant: Hagenholz in Oerlikon or Limeco in Dietikon

We are looking forward to your commitment!



WWF Runs – Running for a Future Worth Living



The WWF runs are another opportunity to support the environment. They are particularly suitable for large groups. We offer two options for this:

Pandanation – Move for Nature

Being active in sports while supporting an environmental project is an unbeatable combination and a great experience for the whole team. Whether it's a company run, city run, or eco-trail—you decide which event you want to participate in.

Register your activity on this [website](#) to collect donations for an animal species or cause of your choice.

All participants will receive a WWF goodie bag. The timeframe is flexible and can be tailored to your needs. If you have any questions or are interested, please feel free to contact [Linda](#).



WWF-Run on Thursday, 24th September 2026

The WWF Run takes place once a year in Zurich. This year, the proceeds will support WWF projects dedicated to protecting bees and promoting biodiversity.

For more information, please visit our website or contact [Anna](#).





Adriana Puente

Co-project manager
Corporate Volunteering



Manuel Baumgartner

Co-project manager
Corporate Volunteering



Frauke Schröder

Program coordinator
Corporate Volunteering



Megan Frehner

Trainee
Corporate Volunteering

You can reach us via e-mail naturaktiv@wwf.ch



©

®

WWF